

1 μ m
|

Mag = 12.00 K X

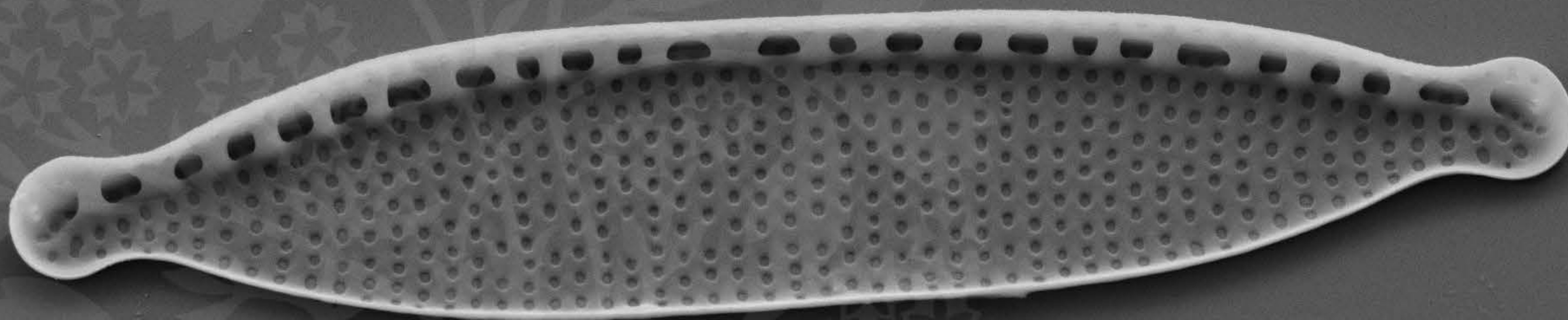
EHT = 5.00 kV

Signal A = SE2 Date :22 May 2018

WD = 4.4 mm

File Name = R10_01.tif





1 μm
|-----|

Mag = 14.00 K X

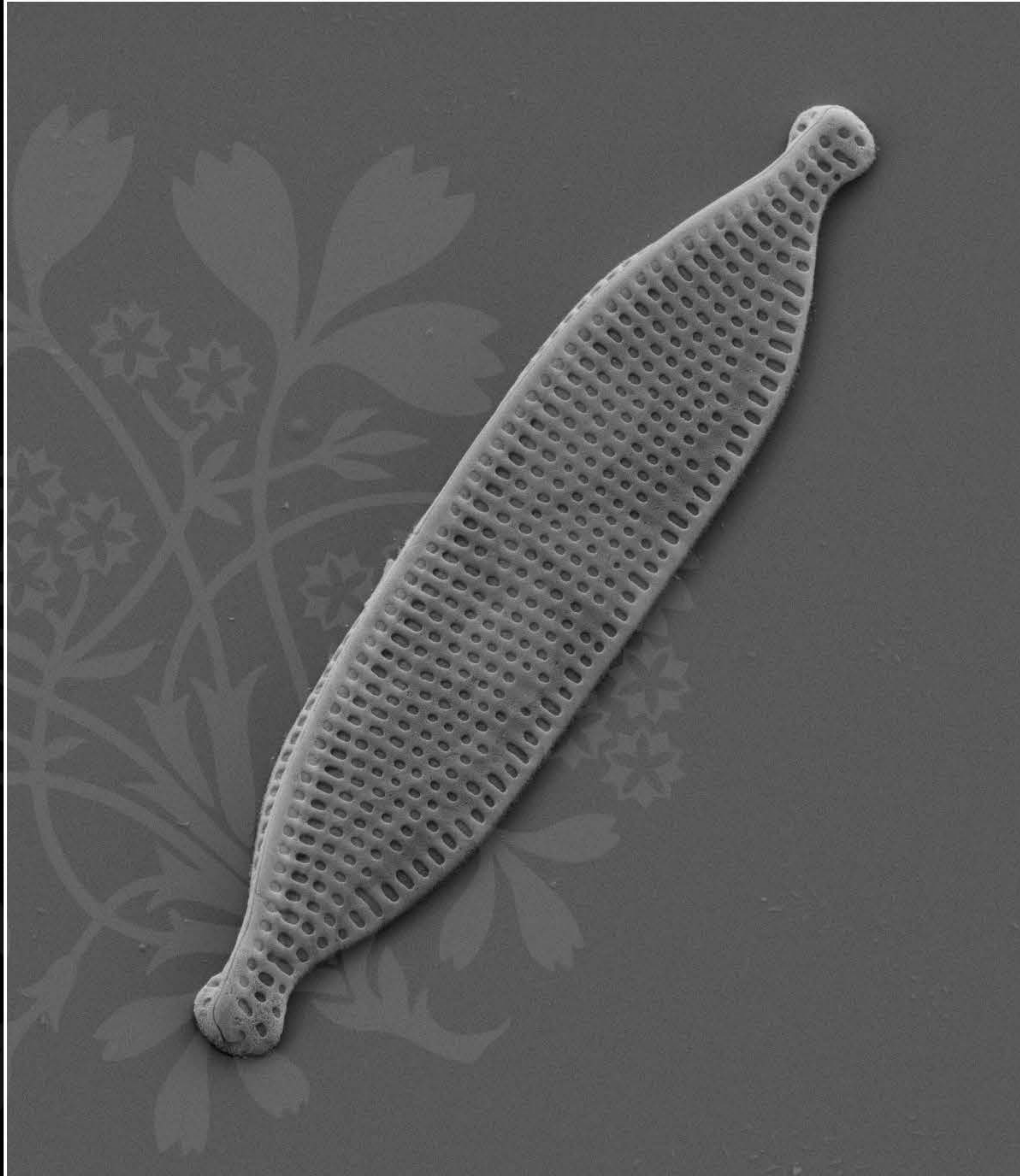
EHT = 5.00 kV

Signal A = SE2 Date :22 May 2018

WD = 4.4 mm

File Name = R10_02.tif





1 μm
┌───┐

Mag = 11.00 K X

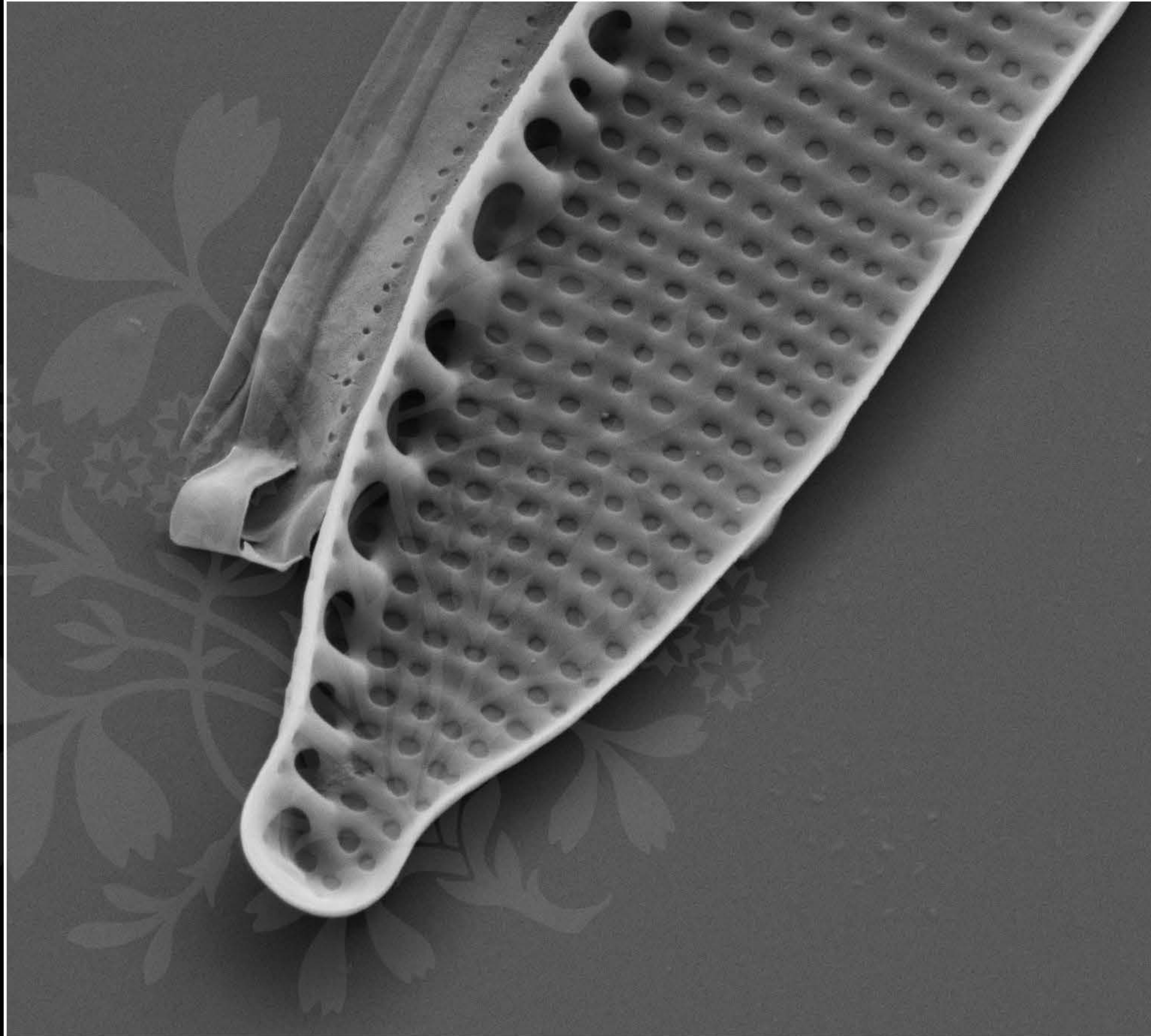
EHT = 5.00 kV

Signal A = SE2 Date :22 May 2018

WD = 4.4 mm

File Name = R10_03.tif





300 nm
┆

Mag = 25.00 K X

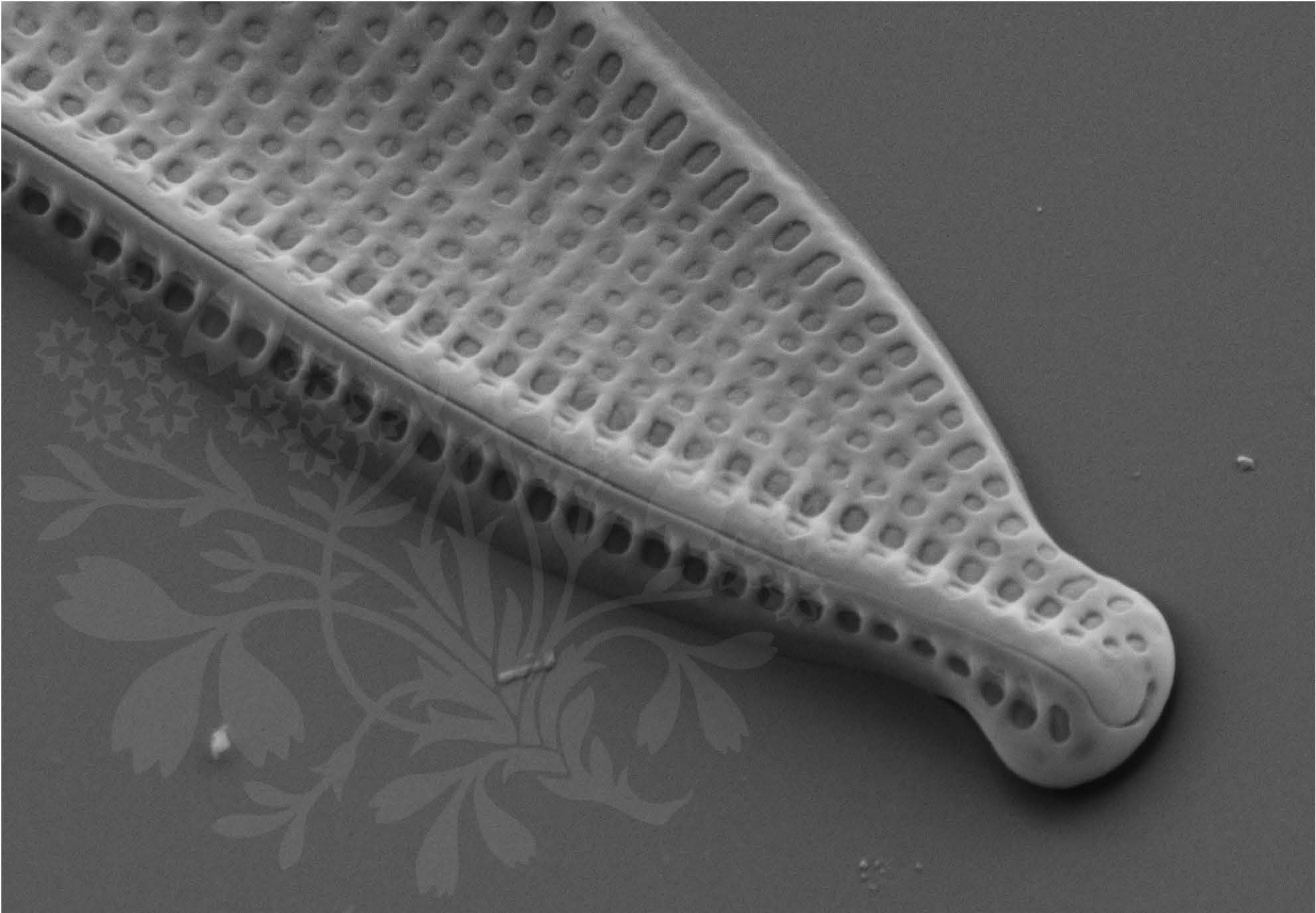
EHT = 5.00 kV

Signal A = SE2 Date :22 May 2018

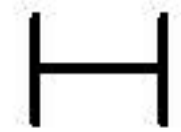
WD = 4.4 mm

File Name = R10_04.tif





200 nm



Mag = 30.00 K X

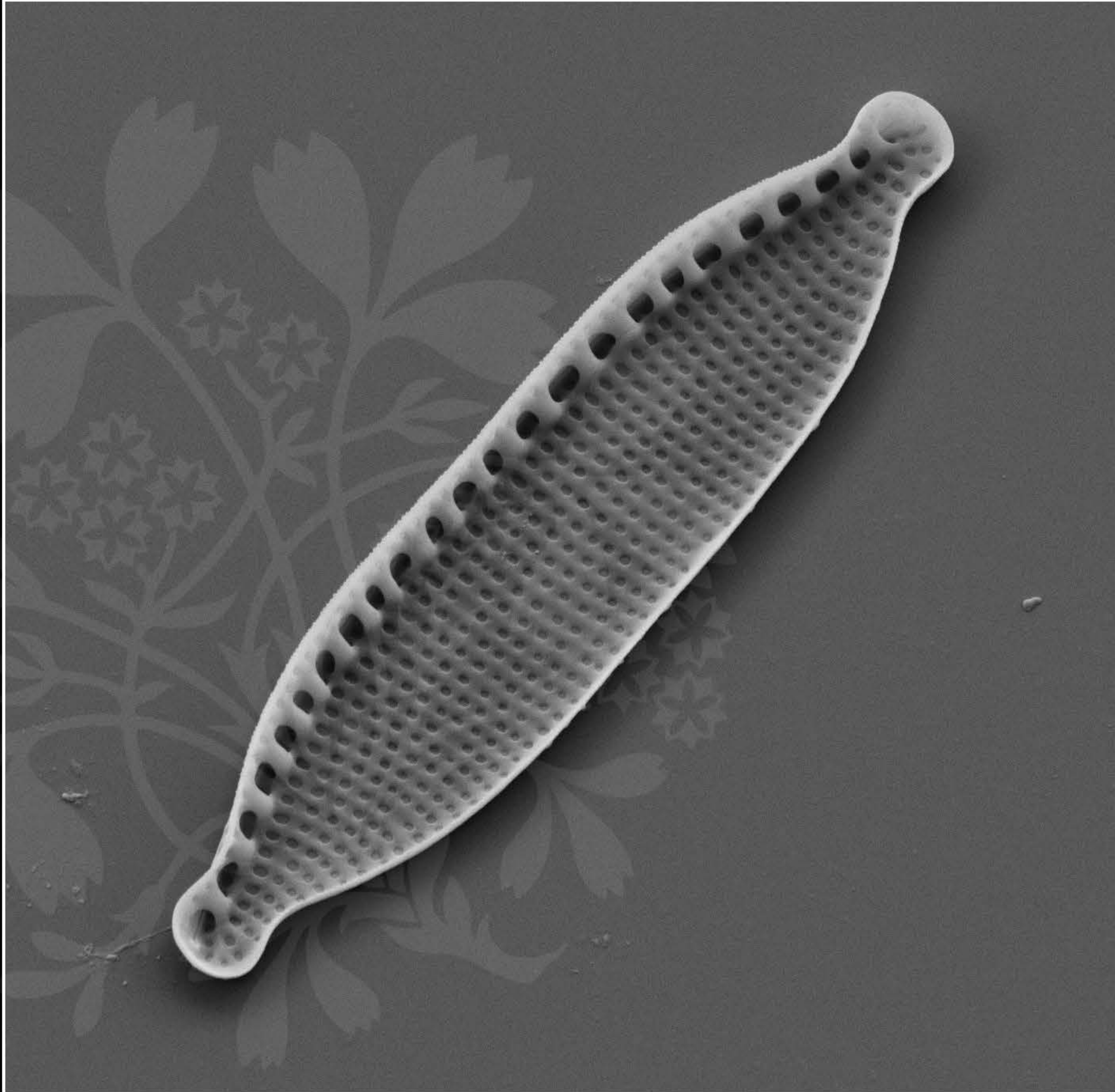
EHT = 5.00 kV

Signal A = SE2 Date :22 May 2018

WD = 4.4 mm

File Name = R10_05.tif





1 μm
|-----|

Mag = 12.00 K X

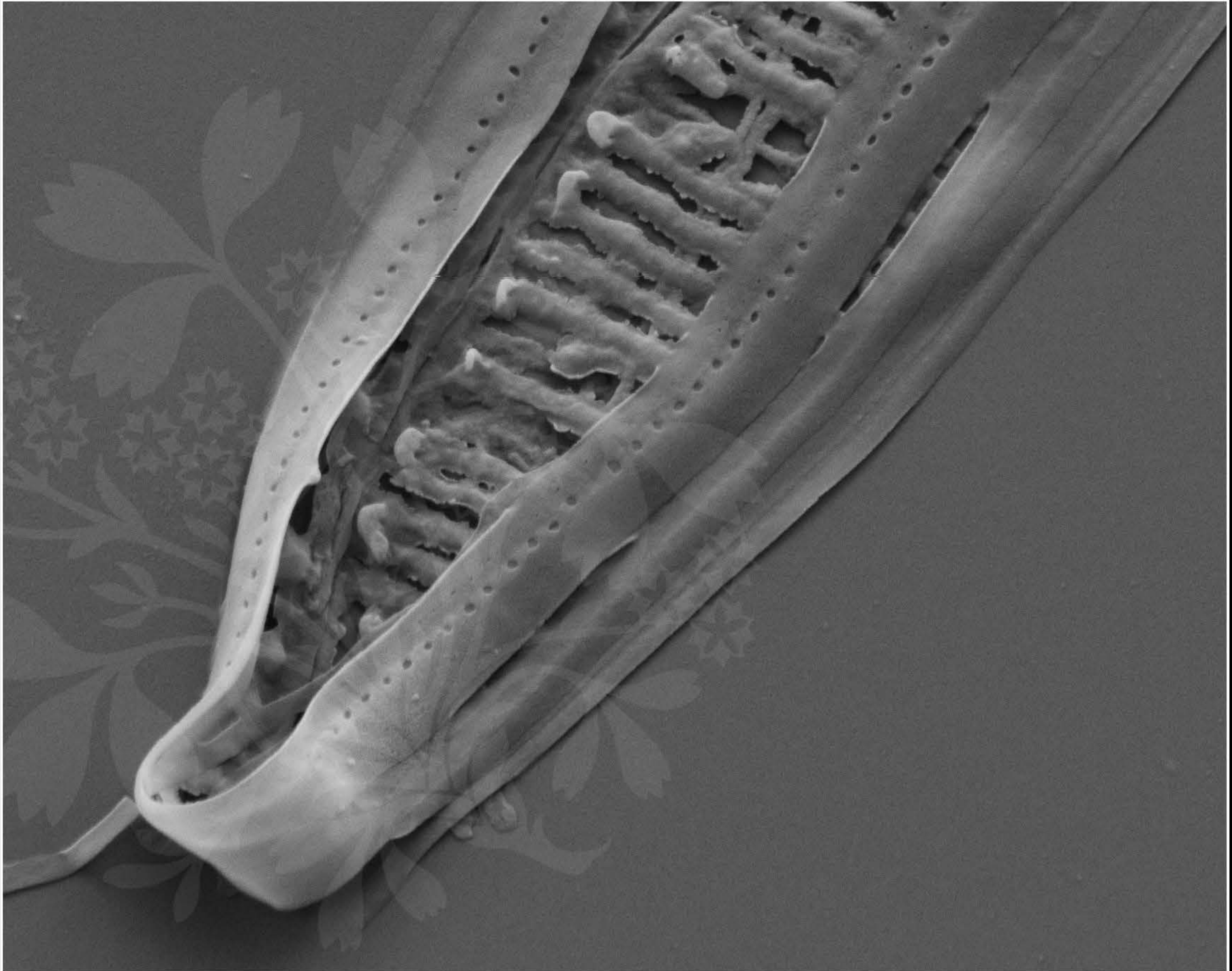
EHT = 5.00 kV

Signal A = SE2 Date :22 May 2018

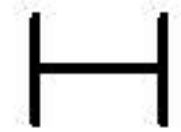
WD = 4.4 mm

File Name = R10_06.tif





200 nm



Mag = 30.00 K X

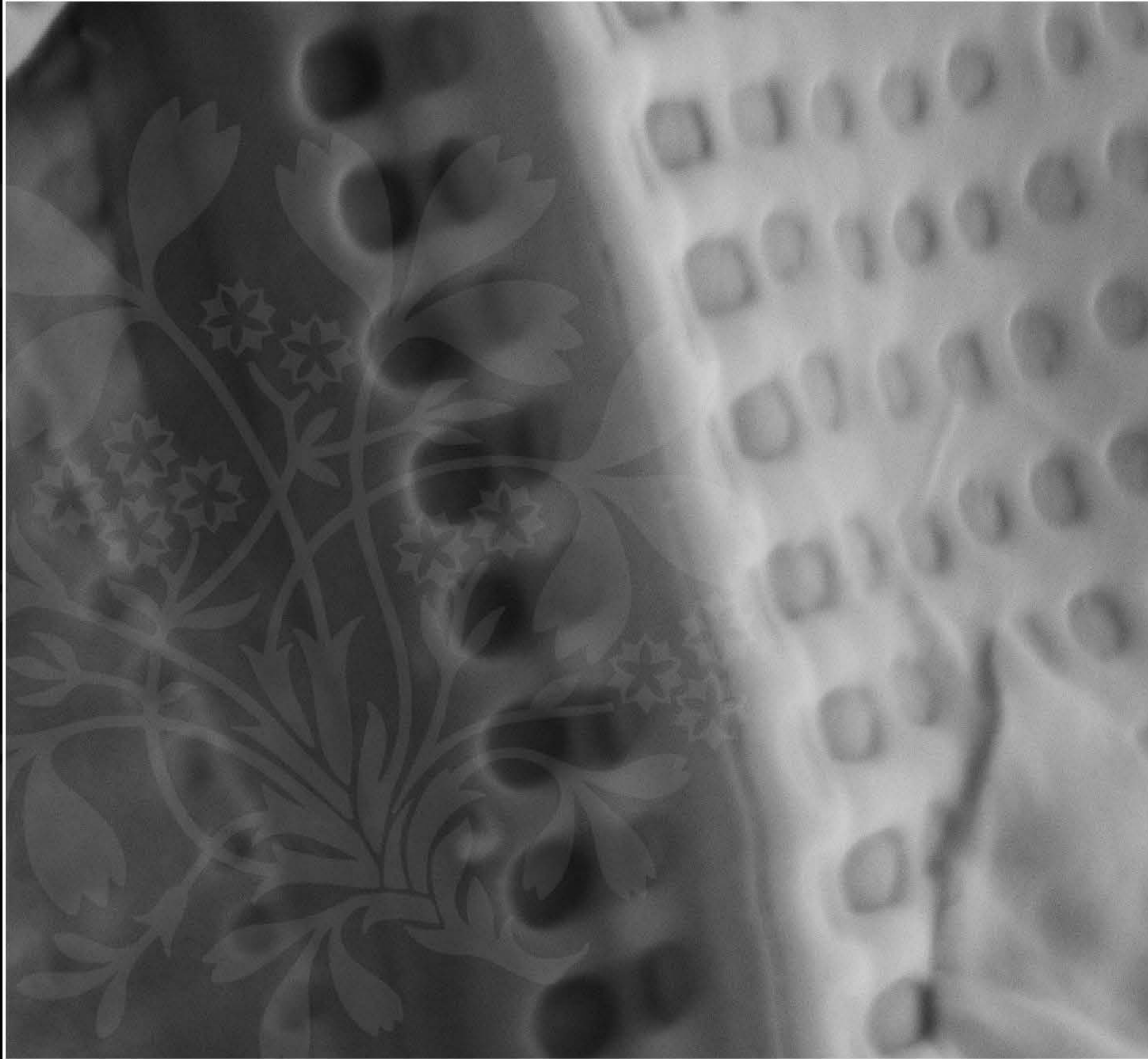
EHT = 5.00 kV

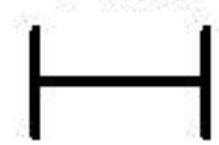
Signal A = SE2 Date :22 May 2018

WD = 4.4 mm

File Name = R10_07.tif





100 nm


Mag = 80.00 K X

EHT = 5.00 kV

Signal A = SE2 Date :22 May 2018

WD = 4.4 mm

File Name = R10_08.tif

